

**RESOLUTION NO. 01 - 19**

**A RESOLUTION ACCEPTING THE LOWEST RESPONSIBLE BID FOR THE VILLAGE OF CHATHAM EARLY WARNING SIRENS**

**WHEREAS**, the Village of Chatham (“Village”) is an Illinois Municipal Corporation existing and operating under the Illinois Municipal Code and the laws of the State of Illinois; and

**WHEREAS**, the Village operates early warning sirens to warn its citizens of certain imminent dangers; and

**WHEREAS**, the Village has advertised and received bids for replacement of its early warning siren system, and

**WHEREAS**, the Village solicited bids in accordance with Illinois law for proposals from companies willing and able to do the work as stated above, and the Village opened all bids on November 29, 2019; and,

**WHEREAS**, the Village received a lowest responsible bid for a total cost of \$54,465.00 from Global Technical Systems, Inc.; and,

**WHEREAS**, the Board of Trustees of the Village believe it is in the best interest of the Village to accept the bid from Global Technical Systems, Inc. for \$54,465.00 as attached hereto.

**NOW THEREFORE, BE IT RESOLVED** by the President and Board of Trustees of the Village of Chatham, Sangamon County, Illinois, as follows:

**Section 1.** Recitals. The foregoing recitals shall be and are hereby incorporated into and made a part of this Resolution as if fully set forth in this Section 1.

**Section 2.** Acceptance of Global Technical Systems, Inc. Bid. The Village Board hereby approves the bid provided by Global Technical Systems, Inc., as attached hereto as Exhibit A, and authorizes the Village Manager and/or Village President to execute any documents necessary to complete the purchase contemplated therein.

**Section 3. Effective Date.** This Resolution shall be in full force and effect from and after its passage and approval.

SO RESOLVED this 10 day of December, 2019.

	YES	NO	ABSENT	PRESENT
KRISTEN CHIARO	X			
ANDREW DETMERS	X			
BRETT GERGER	X			
RYAN MANN	X			
MATT MAU			X	
PAUL SCHERSCHEL	X			
DAVE KIMSEY				
TOTAL	5	0	1	

**APPROVED** by the President of the Village of Chatham, Illinois this 10<sup>TH</sup> day of December, 2019.

  
 Dave Kimsey, Village President

Attest:

  
 Amy Dahlkamp, Village Clerk

**EXHIBIT A**  
**Global Technical Systems, Inc. Quotation**



**GLOBAL  
TECHNICAL  
SYSTEMS, inc.**

# QUOTATION

PREPARED FOR: Chatham ESDA  
Trent Thompson  
117 East Mulberry  
Chatham, IL 62629

QUOTE NUMBER: 140000205  
QUOTE DATE: 11/21/2019  
QUOTE EXPIRES: 12/21/2019  
PAGE NUMBER: 1

PHONE:  
FAX:  
EMAIL: trent@chathamil.net  
TERMS: Net 30

PREPARED BY: Decatur/Cody/Doolin  
EMAIL:  
PHONE:  
FAX:

SCOPE OF WORK: VORTEXR4

QTY	DESCRIPTION	UNIT PRICE	EXTENDED
2	WHELEN R4 VORTEX SERIES SIREN	14,935.50	29,871.00
2	WHELEN SIREN SPEAKER POLE TOP MOUNTING BRACKET	475.00	950.00
4	DEKA BATTERY	180.00	720.00
2	GTSI SIREN/RADIO VHF 2-WAY CONTROLLER	1,730.00	3,460.00
2	WHELEN INSTALLATION KIT	450.00	900.00
2	BRIDGEWELL CLASS 2 60 FT WOODEN POLE	2,682.00	5,364.00
1	GTSI ON/OFF VHF VERSION MECHANICAL SIREN CONT	2,500.00	2,500.00
1	FREIGHT	1,200.00	1,200.00
1	LABOR	9,500.00	9,500.00
1	CUSTOMER TO PROVIDE POWER ( 120 VOLT AC SINGLE PHASE) TO PROVIDED AC POWER DISCONNECT.	0.00	0.00

SOLAR POWER OPTIONS ARE ALSO AVAILABLE.

\*\*\*BATTERY BACKUP INCLUDED\*\*\*

IT IS RECOMMENDED TO REPLACE THE POLES TO THE SPECS OF THE  
NEW SIREN.

IF POLES ARE NOT REPLACED THERE WILL BE CRANE RENTAL FEE OF  
\$3,500.00 TO LIFT THE SIRENS TO THE POLES.



**GLOBAL  
TECHNICAL  
SYSTEMS, inc.**

# QUOTATION

PREPARED FOR: Chatham ESDA  
Trent Thompson  
117 East Mulberry  
Chatham, IL 62629

QUOTE NUMBER: 140000205  
QUOTE DATE: 11/21/2019  
QUOTE EXPIRES: 12/21/2019  
PAGE NUMBER: 2

PHONE:  
FAX:  
EMAIL: trent@chathamil.net  
TERMS: Net 30

PREPARED BY: Decatur/Cody/Doolin  
EMAIL:  
PHONE:  
FAX:

SCOPE OF WORK: VORTEXR4

<b>SUBTOTAL:</b>	\$54,465.00
<b>SALES TAX:</b>	\$0.00
<b>QUOTE TOTAL:</b>	\$54,465.00

OFFERED BY:

ACCEPTED BY:

Payment terms are as set forth above, where satisfactory open account credit is established. Purchaser agrees to pay each invoice when due. A 3% convenience fee will be added to all credit/debit.

In the event payment is not received according to the above terms, GTSI may, at its discretion, assess interest at a rate of 2% per month or the maximum rate allowed by law. Purchaser also agrees to pay reasonable legal fees or agency commissions sustained by GTSI in pursuit of payment which is past due. Sales Tax rate is assumed and may appear differently on invoice. If sales tax exempt, purchaser must provide GTSI with a tax exemption certificate acceptable to the relevant taxing authority. Illinois Telecommunications Excise Tax may apply and will appear on invoice. This document is to be considered proprietary and confidential information between the party listed above and GTSI.

# VORTEXR4™

# WHELEN®

## Specifications

Component	Height Inches (CM)	Width Inches (CM)	Depth Inches (CM)	Weight Lbs. (KG)
VORTEXR4 Speaker & Rotor	49.0 (124.46)	28.5 (72.40)	56.0 (142.24)	234 (106.1)
Electronics Cabinet Type I (Aluminum)	32.5 (82.6)	22.5 (57.2)	10.5 (26.7)	87 (39.5)*
Pole Top Bracket (Optional)	30.5 (77.47) (with top plate)	12.0 (30.5) x 13.5 (34.3)	10.0 (25.4)	71 (32.20)

\*Less batteries. Two batteries, Delco DC74, add 90 Lbs. (40.8kg). Check with Whelen if a freight quote is needed.

## Electrical

- Battery Charger Input: 120VAC, 60Hz, 7A fuse
- Battery Charger Output: 28VDC, 5A (nominal)
- Batteries: 2-12V, 60AH lead calcium (user supplied)
- Standby Current: 82mA, 24 VDC
- Operating Current: 88A, 24VDC
- Power Amplifier Output Power: 1600 watts

## Environmental

- Operating Temperature: -35C to +60C
- Storage Temperature: -65C to +125C
- Humidity, Non Condensing: 0 to 95%

## Ordering Information

### BASIC SYSTEM INCLUDES ALL OF THE FOLLOWING

- VORTEXR4 - Speaker Assembly & Electronics Cabinet

### OPTIONS

- VAUXIN - Auxiliary board for contact closure activation
- VAUXCS - Auxiliary/Status control board for contact closure activation and status
- VD2030LL, VD230NV, VD230NU - One-way radio control
- VC2030LL, VC230NV, VC230NU - Two-way radio control/status monitoring, COMM/STAT™
- VORTT - Two tone sequential
- VSTATUS - Cabinet window LED status indicator
- VPGINT - Paging interface to interface Whelen tones with existing paging systems
- VINTRU - Intrusion alarm
- VSBC80 - Solar power
- VPTB - Speaker pole top bracket
- BSETVOR - One pair of batteries

### NOTES

- 10 digit DTMF Controls • Landline • VHF High Band / 150-170 MHz • UHF / 450-470 MHz • Our VHF High and UHF siren activation control packages include tone squelch, radio, radio interface, 3-5dB gain omni-directional antenna with bracket, 35' (10.67m) of RG58 antenna cable and polyphaser.
- Solar power option include 2 - 80 watt panels, mounting bracket and regulator

## Acoustic Performance

Wattage: 1600 watts

Estimated 70dB Range: 6000 ft / 1828 m

Weather, terrain and other structures may impact the range. Each siren within the system may have a decreased or increased range depending on conditions beyond our control.

MASS NOTIFICATION PRODUCTS  
**Whelen Engineering Company, Inc.**  
 51 Winthrop Road  
 Chester, Connecticut 06412-0684  
 860-526-9504  
 800-637-4736  
 www.whelen.com  
 iowsales@whelen.com

Whelen Engineering Company, Inc. reserves the right to upgrade its products with design improvements without notification.

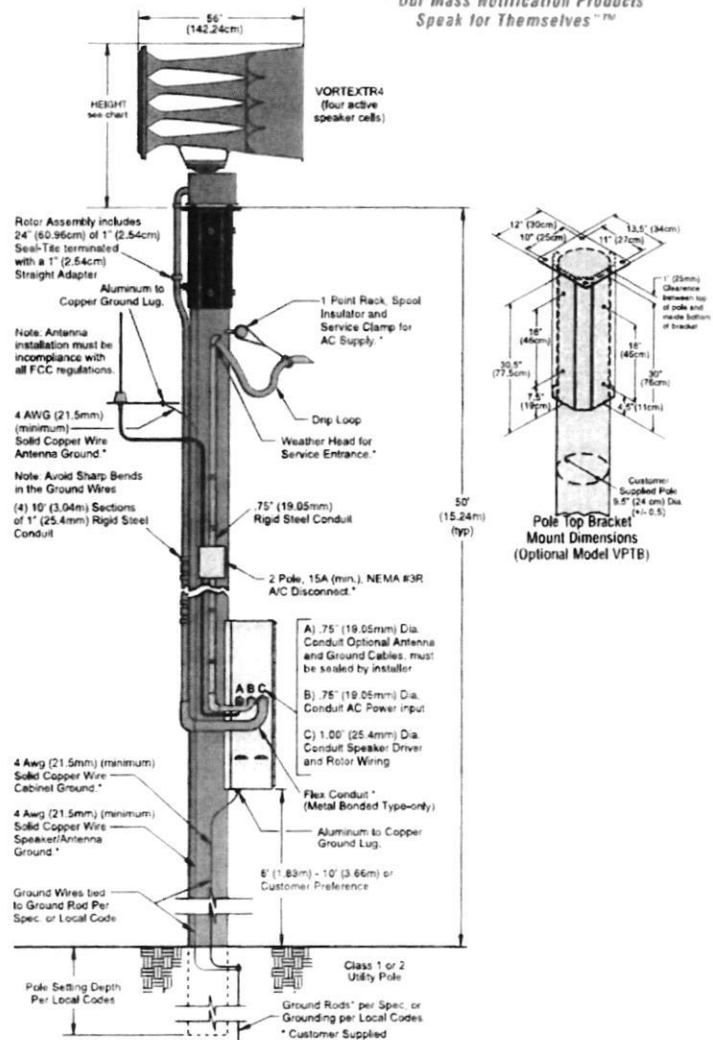
© 2018 Whelen Engineering Company, Inc.

Printed in the U.S.A.

1135BJ-040918



Our Mass Notification Products Speak for Themselves™



# VORTEXR4™

**WHELEN®**  
TRUSTED TO PERFORM™

## Outdoor All Hazards Rotating Warning Siren

Whelen's VORTEXR4 Series All Hazard High Power Sirens provide an economical alternative for powerful siren communication without compromising quality.

### SYSTEM FEATURES

- VORTEXR4 - speaker with four active speaker cells
- Two-compartment (Type I) natural finish aluminum cabinet
- Speaker includes four high efficiency 400 watt speaker drivers
- 50' (15.24m) cable included
- Battery powered. Minimum of 15 minutes of full power output with batteries of our recommendation
- AC temperature compensated 5 amp battery charger
- Local controls or remote controls
- Four tone-only power amplifiers
- Gear driven rotor
- Electronic siren controller
- Tone generator timer
- Local control push-buttons
- Rotor relay control
- SI TEST®
- Low battery alarm
- Battery tray
- Lightning arrestor
- Six standard public warning tones - Wail, Whoop, Attack, Hi-Lo, Alert, Airhorn

### SYSTEM OPTIONS

- Solar option - 2 each 80 watt panels, with brackets and solar regulator
- Batteries - 2 each Whelen approved batteries. Check Whelen's web site, [www.whelen.com](http://www.whelen.com), for other recommended batteries
- Pole top bracket

### SIREN ACTIVATION CONTROLS

Our VHF High and UHF siren activation control packages include the following:

- Radio
- Radio interface
- Tone or digital squelch
- 3-5dB gain omni-directional antenna with bracket
- 35' (10.67m) of RG58 antenna cable
- Polyphaser
- SI TEST

Other features are dependant upon one or two-way controls. Whelen equipment can be interfaced with many different types of two-way radio communications products and systems. The following is offered as standard options. Contact factory for special applications.

The following is available as standard options. BOLD BLUE indicates the Whelen Model:

### ONE-WAY CONTROLS

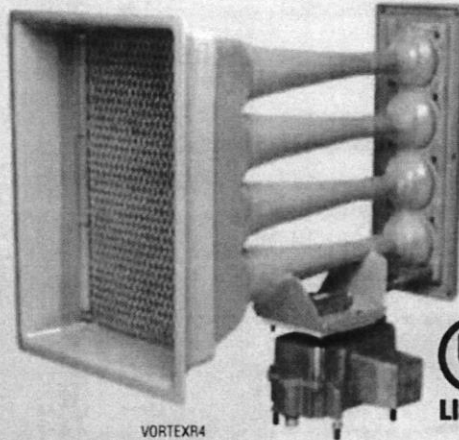
- VAUXIN - Auxiliary board for contact closure activation
- VD2030LL - 10 Digit DTMF landline activation
- VD230NV - 10 Digit DTMF VHF high band / 150-170 MHz
- VD230U - 10 Digit DTMF UHF / 450-470 MHz
- VORTT - Two tone sequential option

### TWO-WAY CONTROLS

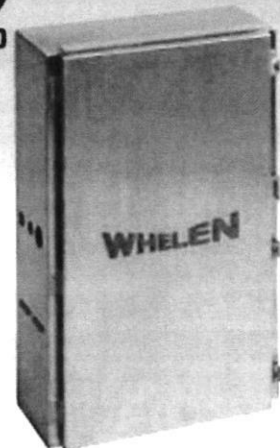
- VAUXCS - Two-way contact closure activation and status board
- VC2030LL - Two-way landline activation
- VC230NV - 10 Digit DTMF VHF high band / 150-170 MHz
- VC230NU - 10 Digit DTMF UHF / 450-470 MHz

### OPTIONS

- VSTATUS - Cabinet window LED status indicator
- VPGINT - Paging interface to interface Whelen tones with existing paging systems
- VINTRU - Intrusion alarm (available with two-way only)



VORTEXR4  
Four cell speaker housing mounted  
on rotor.



TYPE I Electronic Cabinet